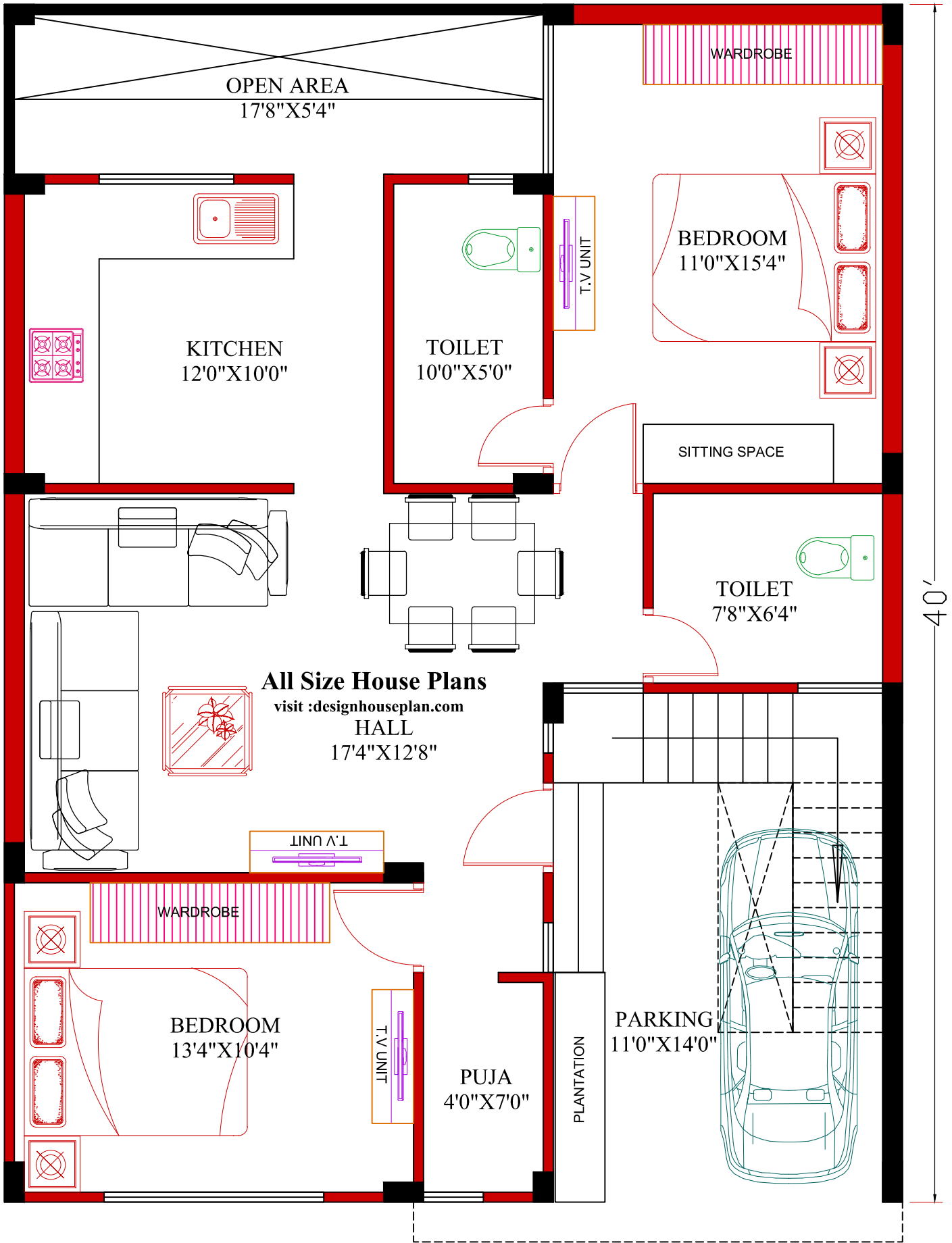


# 30X40 NORTH FACING HOUSE PLANS



**All Size House Plans**  
visit :[designhouseplan.com](http://designhouseplan.com)  
HALL  
17'4"X12'8"

**All Size House Plans**  
visit :[designhouseplan.com](http://designhouseplan.com)

30'0"X40' ,2BHK  
**GROUND FLOOR**